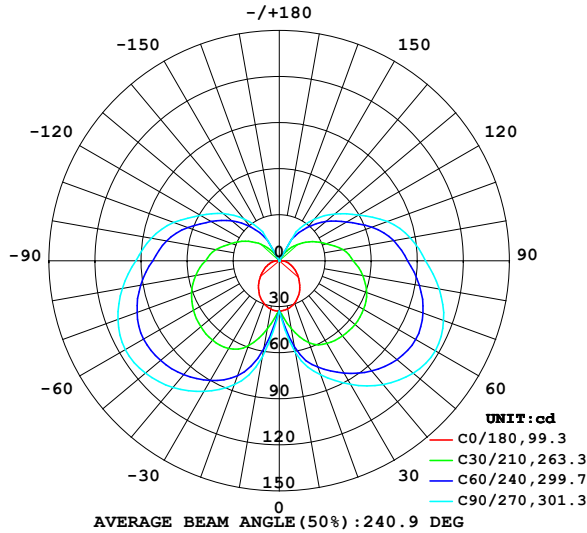


LUMINAIRE PHOTOMETRIC TEST REPORT

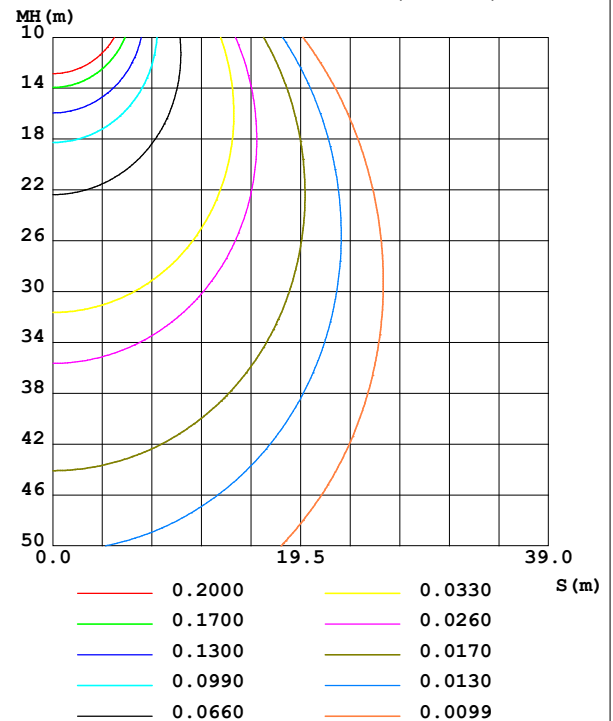
NAME: 99LBL08/CH	TYPE:	WEIGHT: 1
SPEC.:	DIM.: 440 x 50 x 85	SERIAL No.: 0
MFR.: Elmark Industries JSC	SUR.: rectangle	Shielding Angle:

DATA OF LAMP		PHOTOMETRIC DATA			
MODEL	99LBL08/CH	I _{max} (cd)	117.4	S/MH (C0/180)	1.18
NOMINAL POWER (W)	8	LOR (%)	127.2	S/MH (C90/270)	3.10
RATED VOLTAGE (V)	230	TOTAL FLUX (lm)	661.30	η UP, DN (C0-180)	20.2, 43.1
NOMINAL FLUX (lm)	520	CIE CLASS	SEMI-D.	η UP, DN (C180-360)	20.1, 43.7
LAMPS INSIDE	1	η up (%)	40.3	CIBSE SHR NOM	1.00
TEST VOLTAGE (V)	230	η down (%)	86.8	CIBSE SHR MAX	1.10

LUMINOUS INTENSITY DISTRIBUTION DIAGRAM



C0 PLANE ISOLUX DIAGRAM (UNIT:lx)



C Range: 0 - 360DEG
C Interval: 10.0DEG
Test Speed: HIGH
Temperature: 25.3°C
Operators:
Test Date: 13 December 2022

γ Range: 0 - 150DEG
γ Interval: 2.5DEG
Test System: EVERFINE GO-2000A_V1 SYSTEM V2.00.456
Humidity: 65.0%
Test Distance: 6.265m [K=1.0000]
Remarks:

ZONAL FLUX DIAGRAM

ZONAL FLUX DIAGRAM:

γ	C0	C45	C90	C135	C180	C225	C270	C315	γ	Φ zone	Φ total	%lum,lamp
10	31.91	51.50	60.68	50.92	32.05	52.20	63.39	52.65	0- 10	4.133	4.133	0.62,0.79
20	29.39	67.06	79.05	66.78	29.65	71.32	86.00	71.41	10- 20	16.55	20.68	3.13,3.98
30	25.54	74.54	93.06	74.19	25.86	79.95	98.28	79.73	20- 30	31.53	52.21	7.9,10
40	20.93	80.35	105.3	79.82	21.19	84.05	107.8	83.85	30- 40	46.46	98.67	14.9,19
50	16.19	84.15	114.0	83.56	16.30	85.88	113.9	85.79	40- 50	59.94	158.6	24,30.5
60	11.80	85.24	117.4	84.69	11.74	85.47	115.9	85.43	50- 60	70.42	229.0	34.6,44
70	7.996	82.47	113.9	82.09	7.823	82.17	111.9	82.11	60- 70	76.08	305.1	46.1,58.7
80	4.765	76.42	105.8	76.10	4.522	75.94	103.8	75.77	70- 80	75.89	381.0	57.6,73.3
90	2.022	68.33	95.37	67.93	1.748	67.69	93.36	67.42	80- 90	70.55	451.6	68.3,86.8
100	0.4107	61.45	86.68	61.14	0.4189	60.75	84.73	60.39	90-100	62.65	514.2	77.8,98.9
110	0.4377	50.39	74.94	50.11	0.4567	50.20	73.17	49.61	100-110	52.39	566.6	85.7,109
120	0.4863	39.66	59.77	39.43	0.5026	40.39	59.37	39.79	110-120	39.55	606.2	91.7,117
130	0.5215	30.11	47.55	29.96	0.5431	30.72	48.00	30.05	120-130	27.83	634.0	95.9,122
140	0.5620	20.21	35.19	19.58	0.5783	20.09	35.46	20.03	130-140	17.66	651.6	98.5,125
150	0.6053	10.42	21.75	8.760	0.6026	8.873	21.94	10.08	140-150	8.999	660.6	99.9,127
160	0	0	0	0	0	0	0	0	150-160	0.6621	661.3	100,127
170	0	0	0	0	0	0	0	0	160-170	0	661.3	100,127
180	0	0	0	0	0	0	0	0	170-180	0	661.3	100,127
DEG	LUMINOUS INTENSITY:cd									UNIT:lm		

Conical surface Flux(90deg): 127.1 lm

%lum = 19.2%

%lamp = 24.4%

Conical surface Flux(130deg): 266.74 lm

%lum = 40.3%

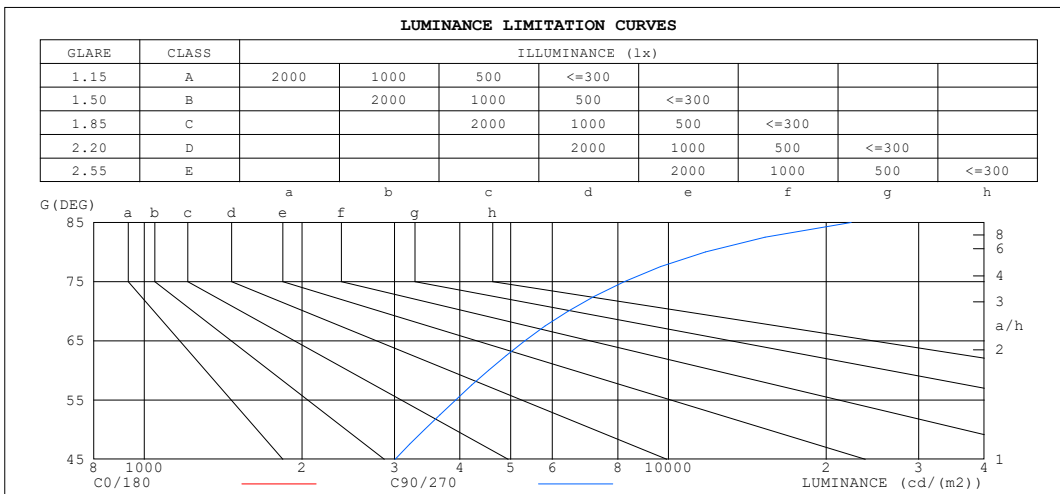
%lamp = 51.3%

C Range: 0 - 360DEG
C Interval: 10.0DEG
Test Speed: HIGH
Temperature:25.3°C
Operators:
Test Date:13 December 2022

γ Range: 0 - 150DEG
 γ Interval: 2.5DEG
Test System:EVERFINE GO-2000A_V1 SYSTEM V2.00.456
Humidity:65.0%
Test Distance:6.265m [K=1.0000]
Remarks:

LUMINANCE LIMITATION CURVES

NAME: 99LBL08/CH	TYPE:	WEIGHT: 1
SPEC.:	DIM.: 440 x 50 x 85	SERIAL No.: 0
MFR.: Elmark Industries JSC	SUR.: rectangle	Shielding Angle:



LUMINANCE cd/(m2)		
G (DEG)	C0/180	C90/270
85	741	22313
80	536	11774
75	476	8238
70	456	6434
65	454	5320
60	461	4536
55	474	3924
50	492	3425
45	512	3008

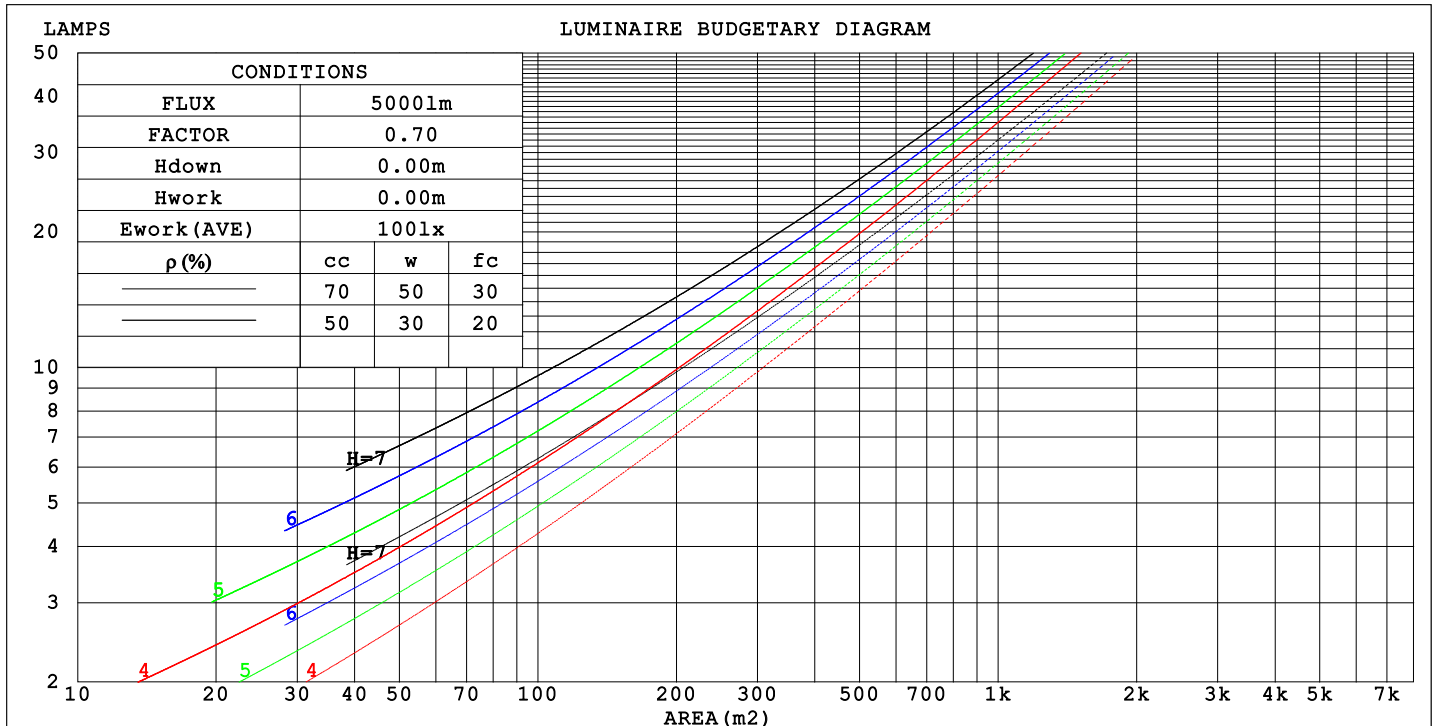
C Range: 0 - 360DEG
C Interval: 10.0DEG
Test Speed: HIGH
Temperature: 25.3°C
Operators:
Test Date: 13 December 2022

γ Range: 0 - 150DEG
γ Interval: 2.5DEG
Test System: EVERFINE GO-2000A_V1 SYSTEM V2.00.456
Humidity: 65.0%
Test Distance: 6.265m [K=1.0000]
Remarks:

CU AND LUMINAIRE BUDGETARY ESTIMATE DIAGRAM

NAME: 99LBL08/CH	TYPE:	WEIGHT: 1
SPEC.:	DIM.: 440 x 50 x 85	SERIAL No.: 0
MFR.: Elmark Industries JSC	SUR.: rectangle	Shielding Angle:

pcc	80%			70%			50%			30%			10%			0														
pw	50%	30%	10%	50%	30%	10%	50%	30%	10%	50%	30%	10%	50%	30%	10%	0														
pfc	20%			20%			20%			20%			20%			0														
RCR	RCR:Room Cavity Ratio															Coefficients of Utilization(CU)														
0.0	1.42	1.42	1.42	1.34	1.34	1.34	1.19	1.19	1.19	1.05	1.05	1.05	.93	.93	.93	.87														
1.0	1.14	1.06	.99	1.07	1.00	.94	.94	.89	.83	.82	.78	.74	.71	.68	.65	.59														
2.0	.96	.85	.75	.90	.80	.71	.78	.70	.64	.68	.62	.56	.58	.53	.49	.44														
3.0	.82	.69	.60	.77	.65	.56	.67	.58	.50	.58	.50	.44	.49	.44	.39	.34														
4.0	.71	.58	.48	.66	.55	.46	.58	.48	.41	.50	.42	.36	.43	.37	.31	.27														
5.0	.62	.50	.40	.58	.47	.38	.51	.41	.34	.44	.36	.30	.38	.31	.26	.22														
6.0	.55	.43	.34	.52	.40	.32	.45	.36	.29	.39	.31	.25	.34	.27	.22	.18														
7.0	.49	.37	.29	.46	.35	.28	.41	.31	.25	.35	.28	.22	.30	.24	.19	.16														
8.0	.45	.33	.25	.42	.31	.24	.37	.28	.21	.32	.24	.19	.28	.21	.16	.13														
9.0	.40	.29	.22	.38	.28	.21	.34	.25	.19	.29	.22	.17	.25	.19	.14	.12														
10.0	.37	.26	.20	.35	.25	.19	.31	.22	.17	.27	.20	.15	.23	.17	.13	.10														



C Range: 0 - 360DEG
C Interval: 10.0DEG
Test Speed: HIGH
Temperature:25.3°C
Operators:
Test Date:13 December 2022

γ Range: 0 - 150DEG
γ Interval: 2.5DEG
Test System:EVERFINE GO-2000A_V1 SYSTEM V2.00.456
Humidity:65.0%
Test Distance:6.265m [K=1.0000]
Remarks:

WEC AND CCEC

NAME: 99LBL08/CH	TYPE:	WEIGHT: 1
SPEC.:	DIM.: 440 x 50 x 85	SERIAL No.: 0
MFR.: Elmark Industries JSC	SUR.: rectangle	Shielding Angle:

pcc	80%			70%			50%			30%			10%			0
pw	50%	30%	10%	50%	30%	10%	50%	30%	10%	50%	30%	10%	50%	30%	10%	0
pfc	20%			20%			20%			20%			20%			0
RCR	RCR:Room Cavity Ratio						Wall Exitance Coefficients(WEC)									
0.0																
1.0	.555	.316	.100	.534	.304	.097	.493	.283	.090	.456	.263	.084	.422	.244	.079	
2.0	.464	.254	.078	.444	.245	.075	.407	.226	.070	.373	.209	.066	.342	.193	.061	
3.0	.404	.215	.064	.386	.207	.062	.352	.191	.058	.321	.176	.054	.292	.162	.050	
4.0	.358	.186	.055	.342	.179	.053	.311	.165	.049	.283	.152	.046	.256	.139	.042	
5.0	.323	.164	.048	.308	.158	.046	.280	.146	.043	.253	.134	.040	.229	.122	.037	
6.0	.293	.147	.042	.280	.141	.041	.254	.130	.038	.230	.119	.035	.207	.109	.032	
7.0	.269	.133	.038	.256	.128	.036	.233	.118	.034	.210	.108	.031	.189	.098	.029	
8.0	.248	.121	.034	.237	.116	.033	.215	.107	.031	.194	.098	.028	.175	.090	.026	
9.0	.230	.111	.031	.220	.107	.030	.199	.099	.028	.180	.090	.026	.162	.082	.024	
10.0	.215	.103	.029	.205	.099	.028	.186	.091	.026	.168	.083	.024	.151	.076	.022	

pcc	80%			70%			50%			30%			10%			0
pw	50%	30%	10%	50%	30%	10%	50%	30%	10%	50%	30%	10%	50%	30%	10%	0
pfc	20%			20%			20%			20%			20%			0
RCR	RCR:Room Cavity Ratio						Ceiling Cavity Exitance Coefficients (CCEC)									
0.0	.550	.550	.550	.470	.470	.470	.321	.321	.321	.184	.184	.184	.059	.059	.059	
1.0	.550	.507	.468	.471	.435	.403	.322	.299	.279	.185	.173	.162	.059	.056	.052	
2.0	.543	.479	.425	.465	.413	.368	.319	.285	.256	.184	.166	.150	.059	.054	.049	
3.0	.534	.459	.400	.458	.396	.346	.315	.275	.243	.182	.161	.143	.058	.052	.047	
4.0	.525	.444	.383	.450	.384	.333	.310	.268	.234	.179	.157	.139	.058	.051	.046	
5.0	.515	.432	.372	.442	.374	.323	.305	.261	.228	.176	.153	.135	.057	.050	.045	
6.0	.505	.423	.364	.434	.366	.317	.300	.256	.224	.174	.151	.133	.056	.049	.044	
7.0	.496	.415	.358	.427	.360	.312	.295	.252	.221	.171	.149	.132	.055	.049	.043	
8.0	.487	.408	.353	.420	.354	.308	.290	.248	.219	.169	.147	.130	.055	.048	.043	
9.0	.479	.402	.350	.413	.349	.305	.286	.245	.217	.167	.145	.129	.054	.048	.043	
10.0	.472	.397	.347	.406	.345	.303	.282	.243	.215	.164	.143	.128	.053	.047	.043	

C Range: 0 - 360DEG
C Interval: 10.0DEG
Test Speed: HIGH
Temperature:25.3°C
Operators:
Test Date:13 December 2022

γ Range: 0 - 150DEG
γ Interval: 2.5DEG
Test System:EVERFINE GO-2000A_V1 SYSTEM V2.00.456
Humidity:65.0%
Test Distance:6.265m [K=1.0000]
Remarks:

UGR(Unified Glare Rating) Table

NAME: 99LBL08/CH					TYPE:			WEIGHT: 1			
SPEC.:					DIM.: 440 x 50 x 85			SERIAL No.: 0			
MFR.: Elmark Industries JSC					SUR.: rectangle			Shielding Angle:			
ceiling/cavity	0.7	0.7	0.5	0.5	0.3	0.7	0.7	0.5	0.5	0.3	
walls	0.5	0.3	0.5	0.3	0.3	0.5	0.3	0.5	0.3	0.3	
working plane	0.2	0.2	0.2	0.2	0.2	0.2	0.2	0.2	0.2	0.2	
Room dimensions		Viewed crosswise					Viewed endwise				
x = 2H y = 2H	13.4	14.7	14.1	15.4	16.3	19.2	20.5	19.9	21.2	22.0	
	15.0	16.2	15.7	16.9	17.8	22.5	23.7	23.2	24.4	25.3	
	15.7	16.8	16.4	17.6	18.5	24.3	25.4	25.0	26.1	27.0	
	16.2	17.3	17.0	18.1	19.0	26.2	27.2	26.9	28.0	28.9	
	16.5	17.5	17.2	18.3	19.2	27.2	28.2	28.0	29.0	30.0	
	16.6	17.6	17.4	18.4	19.3	28.4	29.4	29.1	30.2	31.1	
4H 2H	16.3	17.4	17.0	18.2	19.1	19.7	20.9	20.4	21.6	22.5	
	18.3	19.3	19.0	20.1	21.0	23.3	24.3	24.0	25.0	26.0	
	19.3	20.2	20.0	21.0	22.0	25.2	26.2	26.0	27.0	27.9	
	20.1	20.9	20.9	21.7	22.7	27.4	28.2	28.2	29.0	30.0	
	20.4	21.2	21.2	22.0	23.1	28.6	29.3	29.4	30.2	31.2	
	20.7	21.4	21.5	22.3	23.3	29.9	30.6	30.7	31.5	32.5	
8H 4H	21.4	22.2	22.2	23.0	24.1	25.6	26.4	26.4	27.2	28.2	
	22.8	23.5	23.7	24.3	25.4	28.1	28.7	28.9	29.6	30.6	
	23.5	24.1	24.3	24.9	26.0	29.5	30.1	30.3	30.9	32.0	
	24.0	24.5	24.9	25.4	26.5	31.1	31.6	31.9	32.5	33.6	
12H 4H	22.1	22.8	22.9	23.6	24.7	25.6	26.3	26.4	27.2	28.2	
	23.8	24.4	24.7	25.3	26.3	28.2	28.8	29.1	29.7	30.7	
	24.7	25.2	25.6	26.1	27.2	29.7	30.3	30.6	31.1	32.2	
Variations with the observer position at spacings(CIE Pub.117):											
S = 1.0H	+ 0.1 / - 0.1					+ 0.1 / - 0.1					
1.5H	+ 0.2 / - 0.2					+ 0.2 / - 0.3					
2.0H	+ 0.3 / - 0.4					+ 0.3 / - 0.4					

CIE Pub.117, 520.0 lm Total Lamp Luminous Flux Correct (8log(F/F0) = -2.3)
Area: 0.0516 m2

C Range: 0 - 360DEG
C Interval: 10.0DEG
Test Speed: HIGH
Temperature:25.3°C
Operators:
Test Date:13 December 2022

γ Range: 0 - 150DEG
γ Interval: 2.5DEG
Test System:EVERFINE GO-2000A_V1 SYSTEM V2.00.456
Humidity:65.0%
Test Distance:6.265m [K=1.0000]
Remarks:

UTILIZATION FACTORS TABLE

NAME: 99LBL08/CH	TYPE:	WEIGHT: 1
SPEC.:	DIM.: 440 x 50 x 85	SERIAL No.: 0
MFR.: Elmark Industries JSC	SUR.: rectangle	Shielding Angle:

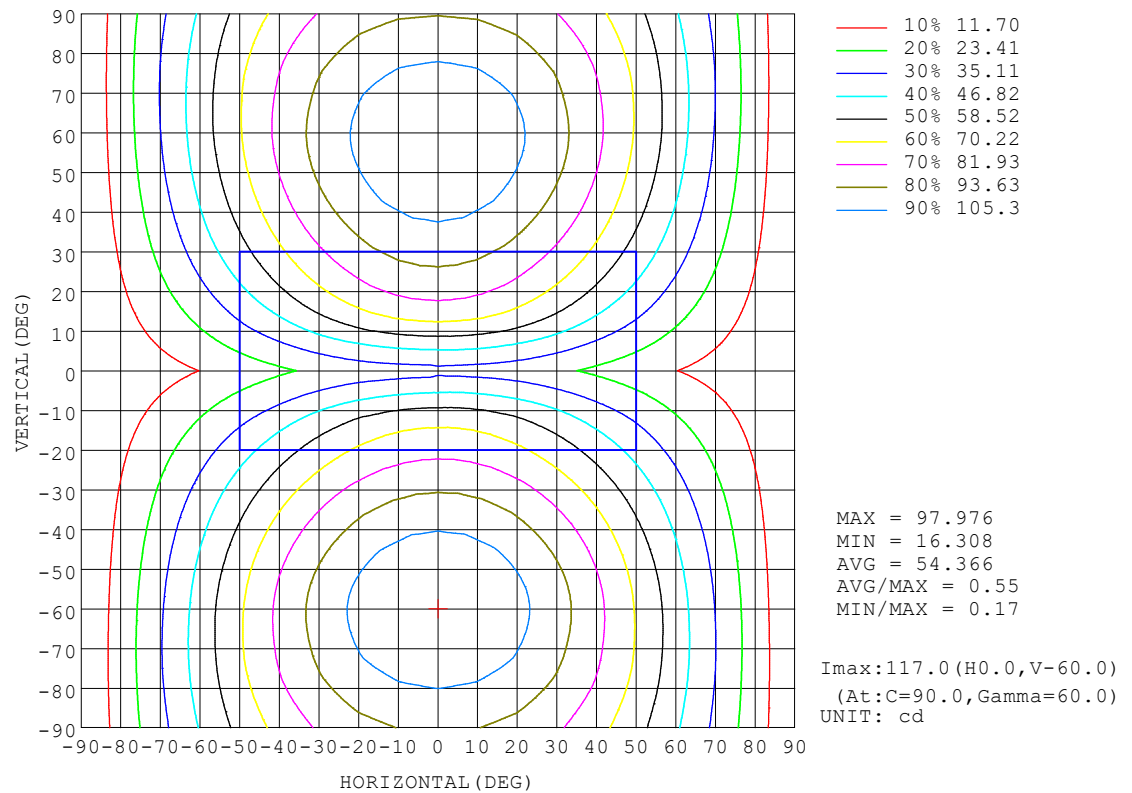
REFLECTANCE										
Ceiling	0.8	0.8	0.8	0.7	0.7	0.7	0.5	0.5	0.5	0
Walls	0.7	0.5	0.3	0.7	0.5	0.3	0.7	0.5	0.3	0
Working plane	0.2	0.2	0.2	0.2	0.2	0.2	0.2	0.2	0.2	0
ROOM INDEX	UTILIZATION FACTORS (PERCENT) $k(RI) \times RCR = 5$									
$k = 0.60$	50	33	24	48	32	23	45	31	22	13
0.80	61	43	32	58	42	31	54	39	30	19
1.00	70	52	40	67	50	39	61	50	37	24
1.25	79	61	49	75	59	47	68	54	44	30
1.50	86	68	56	82	65	54	74	60	50	34
2.00	96	79	67	91	76	65	81	69	60	41
2.50	102	87	75	97	83	72	86	75	66	46
3.00	108	94	82	102	89	79	91	80	72	50
4.00	114	102	92	108	97	88	96	87	80	56
5.00	119	108	99	112	103	94	100	92	85	60
ROOM INDEX	UF(total)									Direct
According to DIN EN 13032-2 2004			Suspended					SHRNOM = 1.25		

C Range: 0 - 360DEG
C Interval: 10.0DEG
Test Speed: HIGH
Temperature: 25.3°C
Operators:
Test Date: 13 December 2022

γ Range: 0 - 150DEG
γ Interval: 2.5DEG
Test System: EVERFINE GO-2000A_V1 SYSTEM V2.00.456
Humidity: 65.0%
Test Distance: 6.265m [K=1.0000]
Remarks:

ISOCANDELA DIAGRAM

NAME: 99LBL08/CH	TYPE:	WEIGHT: 1
SPEC.:	DIM.: 440 x 50 x 85	SERIAL No.: 0
MFR.: Elmark Industries JSC	SUR.: rectangle	Shielding Angle:

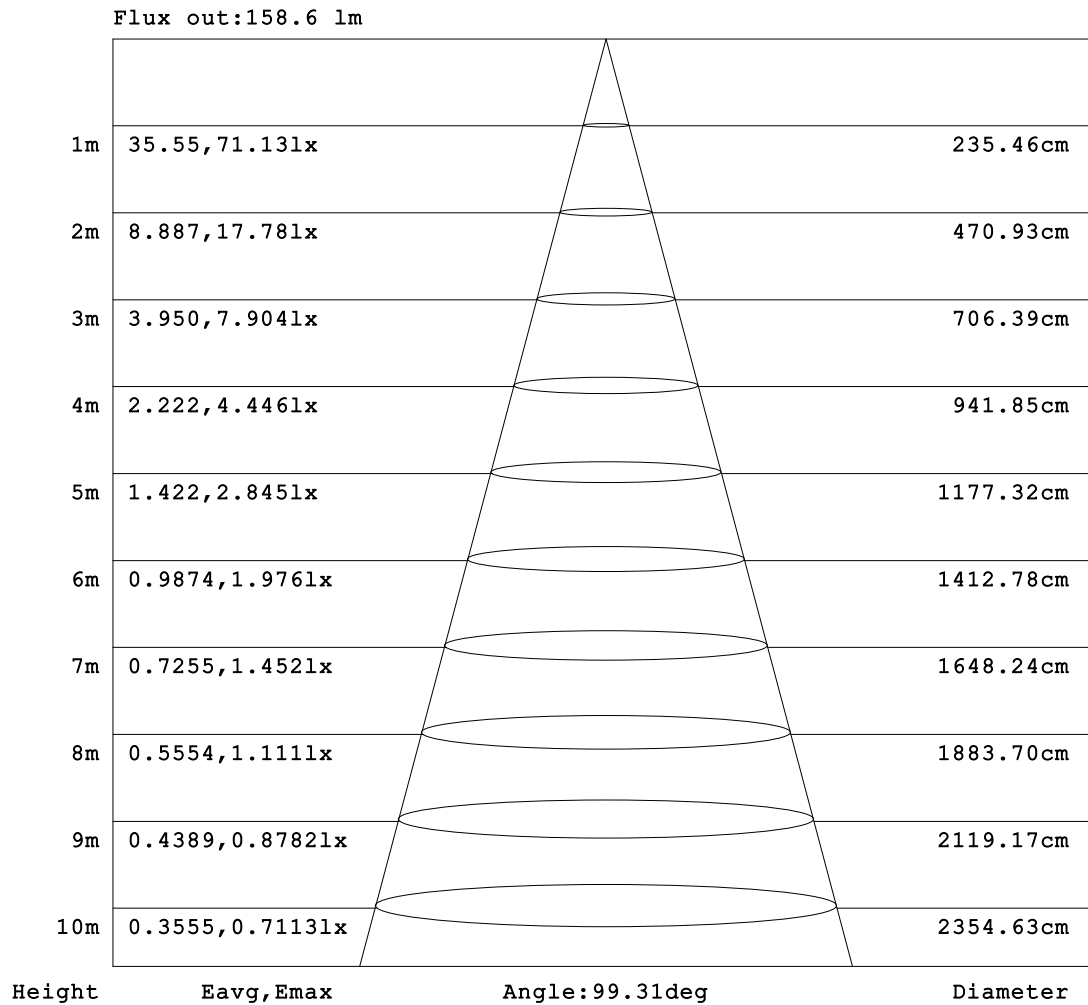


C Range: 0 - 360DEG
 C Interval: 10.0DEG
 Test Speed: HIGH
 Temperature:25.3°C
 Operators:
 Test Date:13 December 2022

γ Range: 0 - 150DEG
 γ Interval: 2.5DEG
 Test System:EVERFINE GO-2000A_V1 SYSTEM V2.00.456
 Humidity:65.0%
 Test Distance:6.265m [K=1.0000]
 Remarks:

AAI Figure

NAME: 99LBL08/CH	TYPE:	WEIGHT: 1
SPEC.:	DIM.: 440 x 50 x 85	SERIAL No.: 0
MFR.: Elmark Industries JSC	SUR.: rectangle	Shielding Angle:



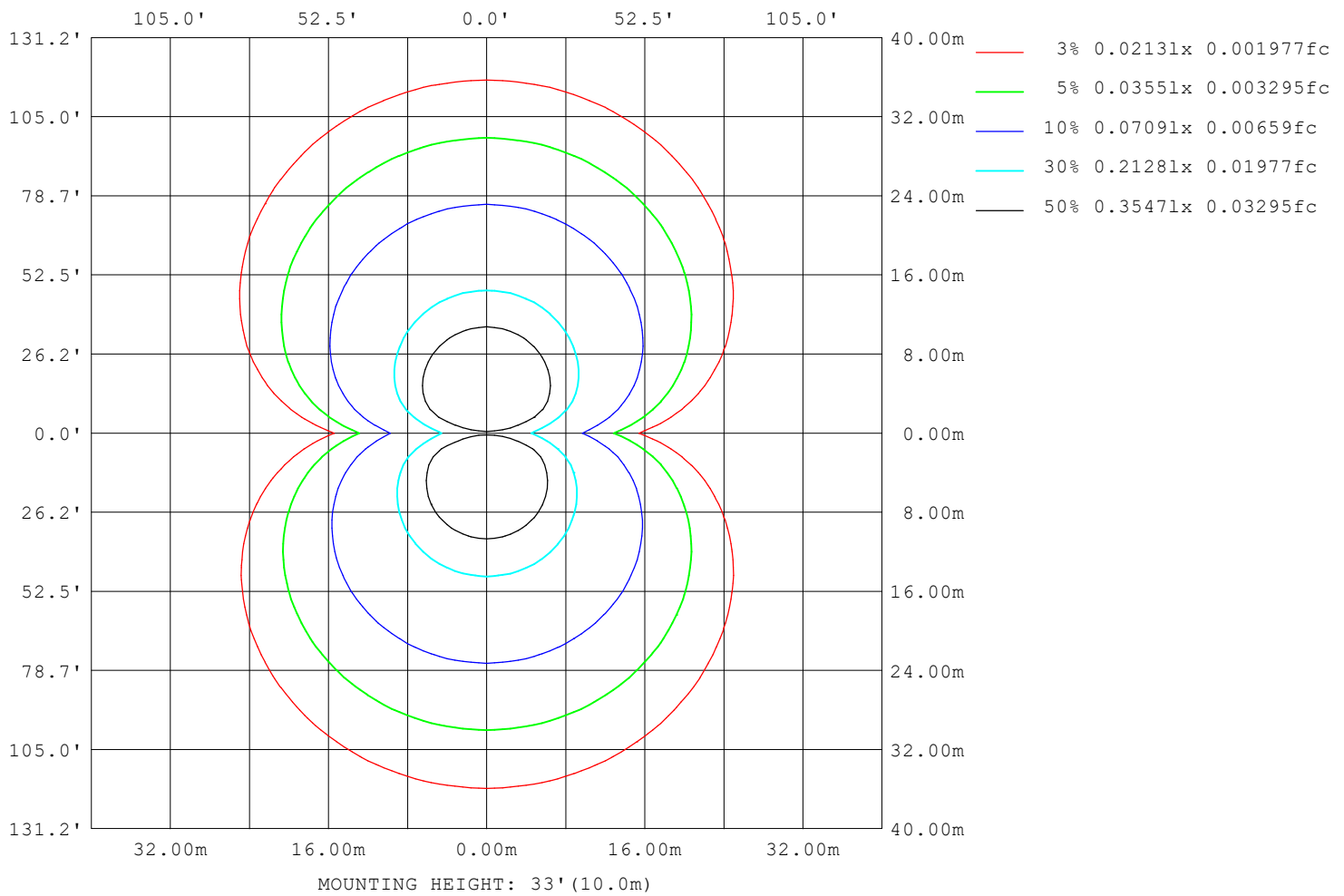
Note: The Curves indicate the illuminated area and the average illumination when the luminaire is at different distance.

C Range: 0 - 360DEG
 C Interval: 10.0DEG
 Test Speed: HIGH
 Temperature: 25.3°C
 Operators:
 Test Date: 13 December 2022

γ Range: 0 - 150DEG
 γ Interval: 2.5DEG
 Test System: EVERFINE GO-2000A_V1 SYSTEM V2.00.456
 Humidity: 65.0%
 Test Distance: 6.265m [K=1.0000]
 Remarks:

ISOLUX DIAGRAM

NAME: 99LBL08/CH	TYPE:	WEIGHT: 1
SPEC.:	DIM.: 440 x 50 x 85	SERIAL No.: 0
MFR.: Elmark Industries JSC	SUR.: rectangle	Shielding Angle:



C Range: 0 - 360DEG
 C Interval: 10.0DEG
 Test Speed: HIGH
 Temperature: 25.3°C
 Operators:
 Test Date: 13 December 2022

γ Range: 0 - 150DEG
 γ Interval: 2.5DEG
 Test System: EVERFINE GO-2000A_V1 SYSTEM V2.00.456
 Humidity: 65.0%
 Test Distance: 6.265m [K=1.0000]
 Remarks:

LED Avg.L Report

NAME: 99LBL08/CH	TYPE:	WEIGHT: 1
SPEC.:	DIM.: 440 x 50 x 85	SERIAL No.: 0
MFR.: Elmark Industries JSC	SUR.: rectangle	Shielding Angle:

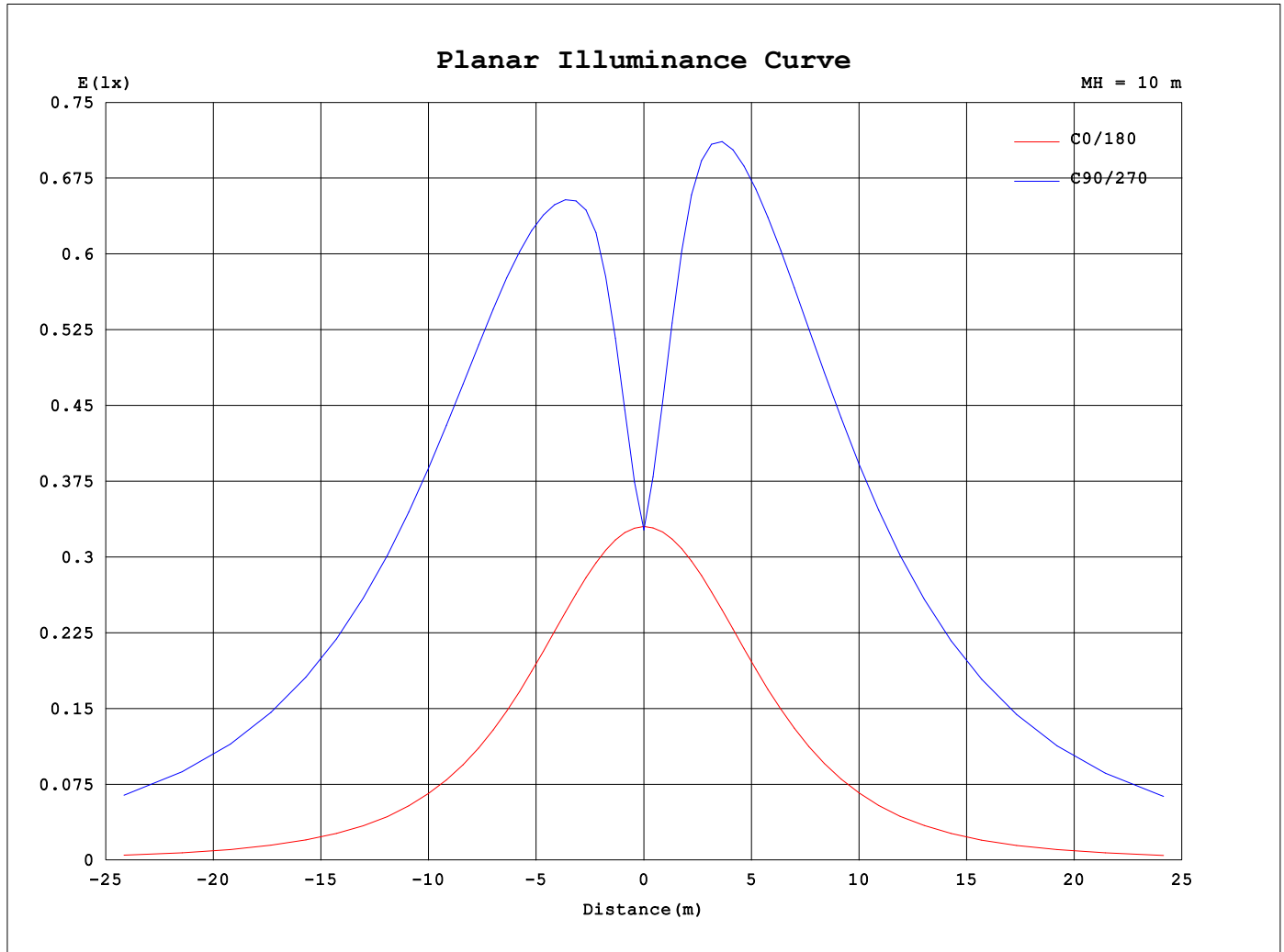
AvgL	cd/m2
L_0~180 (65) av	448
L_0~180 (75) av	465
L_0~180 (85) av	707
L_90~270 (65) av	5294
L_90~270 (75) av	8185
L_90~270 (85) av	22178
L_45 (65) av	3876
L_45 (75) av	5965
L_45 (85) av	16107

Standard: GB/T 29293-2012

C Range: 0 - 360DEG
C Interval: 10.0DEG
Test Speed: HIGH
Temperature:25.3°C
Operators:
Test Date:13 December 2022

γ Range: 0 - 150DEG
γ Interval: 2.5DEG
Test System:EVERFINE GO-2000A_V1 SYSTEM V2.00.456
Humidity:65.0%
Test Distance:6.265m [K=1.0000]
Remarks:

Planar Illuminance Curve



C Range: 0 - 360DEG
 C Interval: 10.0DEG
 Test Speed: HIGH
 Temperature: 25.3°C
 Operators:
 Test Date: 13 December 2022

γ Range: 0 - 150DEG
 γ Interval: 2.5DEG
 Test System: EVERFINE GO-2000A_V1 SYSTEM V2.00.456
 Humidity: 65.0%
 Test Distance: 6.265m [K=1.0000]
 Remarks:

LUMINOUS DISTRIBUTION INTENSITY DATA

NAME: 99LBL08/CH	TYPE:	WEIGHT: 1
SPEC.:	DIM.: 440 x 50 x 85	SERIAL No.: 0
MFR.: Elmark Industries JSC	SUR.: rectangle	Shielding Angle:

Table--1

UNIT: cd

C (DEG) γ (DEG)	0	10	20	30	40	50	60	70	80	90	100	110	120	130	140	150	160	170	180
0	32.8	32.8	32.8	32.8	32.8	32.8	32.8	32.8	32.8	32.8	32.8	32.8	32.8	32.8	32.8	32.8	32.8	32.8	32.8
5	32.6	33.7	35.7	37.8	40.0	41.8	43.4	44.5	45.3	45.3	45.2	44.1	43.0	41.1	39.3	37.1	35.0	33.1	32.6
10	31.9	35.1	39.9	44.8	49.5	53.5	56.7	59.0	60.4	60.7	60.4	58.7	56.5	52.9	48.9	44.0	39.1	34.3	32.1
15	30.8	36.2	43.9	51.3	58.1	63.5	67.4	69.8	71.3	71.6	71.3	69.6	67.2	63.1	57.7	50.7	43.1	35.4	31.0
20	29.4	37.1	47.2	56.8	64.4	69.7	73.8	76.7	78.6	79.0	78.6	76.5	73.7	69.4	64.1	56.3	46.6	36.3	29.7
25	27.6	37.5	49.8	60.5	68.1	74.2	79.2	83.1	85.4	86.1	85.4	82.8	79.1	73.9	67.9	60.1	49.3	36.7	27.9
30	25.5	37.4	51.5	62.3	70.8	78.3	84.5	89.3	92.2	93.1	92.2	88.9	84.3	77.8	70.5	62.0	51.0	36.6	25.9
35	23.3	36.9	52.1	63.3	73.2	82.0	89.4	95.1	98.5	99.6	98.5	94.7	89.2	81.5	72.8	62.9	51.7	36.1	23.6
40	20.9	36.2	51.7	64.0	75.3	85.4	93.8	100	104	105	104	99.8	93.5	84.8	74.8	63.5	51.3	35.3	21.2
45	18.5	35.2	51.0	64.4	77.0	88.2	97.4	104	109	110	109	104	97.1	87.5	76.4	63.8	50.4	34.2	18.7
50	16.2	33.9	49.9	64.5	78.1	90.2	100	108	112	114	112	108	100.0	89.6	77.5	63.8	49.3	32.9	16.3
55	13.9	32.3	48.7	64.2	78.6	91.5	102	110	115	117	115	110	102	90.9	78.0	63.4	48.0	31.3	14.0
60	11.8	30.3	47.3	63.5	78.6	91.9	103	111	116	117	116	111	103	91.4	78.0	62.7	46.5	29.3	11.7
65	9.83	28.3	45.7	62.3	77.7	91.1	102	110	115	116	115	110	102	90.7	77.2	61.6	44.8	27.3	9.70
70	8.00	26.3	43.8	60.7	75.9	89.1	99.6	108	112	114	113	108	99.7	88.7	75.4	59.9	42.9	25.2	7.82
75	6.32	24.2	41.7	58.2	73.2	86.2	96.6	104	109	110	109	104	96.7	85.9	72.8	57.6	40.8	23.1	6.10
80	4.77	21.9	39.0	55.3	70.1	82.8	92.7	100	104	106	105	100	92.8	82.5	69.7	54.6	38.2	20.9	4.52
85	3.31	19.4	36.0	51.9	66.3	78.7	88.3	95.4	99.4	101	99.5	95.4	88.4	78.4	65.9	51.3	35.3	18.5	3.05
90	2.02	16.5	32.6	48.2	62.3	74.3	83.6	90.4	94.2	95.4	94.3	90.3	83.6	74.0	61.9	47.6	31.8	15.6	1.75
95	0.66	14.2	30.4	45.7	59.4	71.0	79.9	86.4	90.0	91.2	90.1	86.3	79.9	70.7	59.0	45.0	29.6	13.4	0.79
100	0.41	11.4	26.8	42.3	55.8	67.1	75.8	82.1	85.5	86.7	85.6	82.0	75.8	66.8	55.4	41.7	26.1	10.7	0.42
105	0.42	8.98	22.9	37.4	50.9	62.2	70.7	76.9	80.3	81.4	80.4	76.8	70.7	61.9	50.6	36.9	22.3	8.38	0.44
110	0.44	6.83	19.8	32.7	44.9	55.8	64.3	70.4	73.8	74.9	73.8	70.3	64.2	55.6	44.6	32.3	19.3	6.36	0.46
115	0.46	4.73	16.7	28.9	39.8	49.4	57.1	62.9	66.2	67.3	66.2	62.8	57.0	49.1	39.5	28.5	16.3	4.49	0.48
120	0.49	2.85	13.7	25.1	35.3	44.0	50.8	55.9	58.7	59.8	58.8	55.8	50.8	43.8	35.1	24.8	13.4	2.60	0.50
125	0.51	1.07	10.9	21.3	30.9	39.1	45.3	49.9	52.5	53.4	52.6	49.8	45.2	38.9	30.7	21.0	10.6	0.95	0.52
130	0.52	0.57	8.03	17.4	26.3	34.0	39.9	44.2	46.7	47.5	46.7	44.2	39.9	33.8	26.1	17.2	7.90	0.63	0.54
135	0.54	0.57	5.32	13.7	21.6	28.7	34.2	38.4	40.7	41.6	40.8	38.3	34.2	28.6	21.5	13.4	5.21	0.60	0.56
140	0.56	0.58	2.78	10.1	17.1	23.3	28.4	32.2	34.4	35.2	34.4	32.2	28.4	23.0	16.2	9.36	2.53	0.62	0.58
145	0.58	0.60	0.68	6.50	12.6	18.0	22.4	25.8	27.8	28.6	27.9	25.8	22.1	16.7	11.1	5.74	0.78	0.63	0.60
150	0.61	0.61	0.63	3.06	8.12	12.7	16.6	19.4	21.2	21.8	21.2	19.3	15.1	10.8	6.73	2.57	0.70	0.64	0.60
155	0.00	0.00	0.00	0.00	0.00	0.00	0.00	0.00	0.00	0.00	0.00	0.00	0.00	0.00	0.00	0.00	0.00	0.00	0.00
160	0.00	0.00	0.00	0.00	0.00	0.00	0.00	0.00	0.00	0.00	0.00	0.00	0.00	0.00	0.00	0.00	0.00	0.00	0.00
165	0.00	0.00	0.00	0.00	0.00	0.00	0.00	0.00	0.00	0.00	0.00	0.00	0.00	0.00	0.00	0.00	0.00	0.00	0.00
170	0.00	0.00	0.00	0.00	0.00	0.00	0.00	0.00	0.00	0.00	0.00	0.00	0.00	0.00	0.00	0.00	0.00	0.00	0.00
175	0.00	0.00	0.00	0.00	0.00	0.00	0.00	0.00	0.00	0.00	0.00	0.00	0.00	0.00	0.00	0.00	0.00	0.00	0.00
180	0.00	0.00	0.00	0.00	0.00	0.00	0.00	0.00	0.00	0.00	0.00	0.00	0.00	0.00	0.00	0.00	0.00	0.00	0.00

C Range: 0 - 360DEG

C Interval: 10.0DEG

Test Speed: HIGH

Temperature:25.3°C

Operators:

Test Date:13 December 2022

γ Range: 0 - 150DEG

γ Interval: 2.5DEG

Test System:EVERFINE GO-2000A_V1 SYSTEM V2.00.456

Humidity:65.0%

Test Distance:6.265m [K=1.0000]

Remarks:

LUMINOUS DISTRIBUTION INTENSITY DATA

NAME: 99LBL08/CH	TYPE:	WEIGHT: 1
SPEC.:	DIM.: 440 x 50 x 85	SERIAL No.: 0
MFR.: Elmark Industries JSC	SUR.: rectangle	Shielding Angle:

Table--2

UNIT: cd

C (DEG) γ (DEG)	190	200	210	220	230	240	250	260	270	280	290	300	310	320	330	340	350		
0	32.8	32.8	32.8	32.8	32.8	32.8	32.8	32.8	32.8	32.8	32.8	32.8	32.8	32.8	32.8	32.8	32.8		
5	33.5	35.4	37.7	39.8	41.9	43.5	44.9	45.6	46.1	45.8	45.2	43.9	42.3	40.4	38.3	36.0	34.0		
10	34.9	39.7	45.0	49.9	54.5	58.1	61.1	62.6	63.4	62.8	61.2	58.5	54.9	50.4	45.5	40.3	35.4		
15	36.3	44.1	52.3	59.9	66.5	71.1	74.6	76.4	77.1	76.5	74.6	71.3	66.7	60.3	52.7	44.6	36.6		
20	37.3	48.0	58.9	67.9	74.7	79.7	83.4	85.3	86.0	85.3	83.2	79.8	74.7	68.1	59.1	48.3	37.5		
25	37.9	51.3	63.5	72.9	80.2	85.5	89.5	91.8	92.6	91.8	89.3	85.5	80.0	72.9	63.6	51.4	38.0		
30	38.1	53.6	66.1	76.0	83.9	90.0	94.6	97.4	98.3	97.4	94.4	89.9	83.6	75.9	66.0	53.5	38.0		
35	37.8	54.4	67.3	78.0	86.7	93.7	99.1	102	103	102	99.0	93.7	86.4	77.8	67.1	54.3	37.6		
40	37.2	54.1	67.7	79.2	88.9	96.9	103	107	108	107	103	96.9	88.7	79.0	67.5	53.9	36.8		
45	36.2	53.2	67.5	79.9	90.6	99.3	106	110	111	110	106	99.4	90.4	79.8	67.3	53.0	35.8		
50	34.8	52.0	66.9	80.1	91.6	101	108	113	114	113	108	101	91.5	80.1	66.7	51.7	34.4		
55	32.9	50.4	65.9	79.9	92.1	102	110	114	116	114	109	102	92.0	79.8	65.8	50.2	32.6		
60	30.8	48.6	64.5	79.1	91.8	102	110	114	116	115	110	102	91.7	79.1	64.4	48.4	30.5		
65	28.7	46.6	62.9	77.9	90.7	101	109	113	115	113	108	101	90.6	77.8	62.8	46.4	28.4		
70	26.5	44.3	60.9	75.9	88.5	98.6	106	111	112	111	106	98.7	88.4	75.8	60.7	44.1	26.2		
75	24.3	41.9	58.3	73.0	85.5	95.6	103	107	108	107	103	95.7	85.4	73.0	58.2	41.7	23.9		
80	21.9	39.3	55.4	69.9	82.0	91.6	98.5	103	104	103	98.4	91.7	81.8	69.7	55.2	38.9	21.5		
85	19.5	36.3	52.0	66.2	78.0	87.3	93.9	97.8	98.8	97.9	93.8	87.3	77.7	65.9	51.7	35.9	19.0		
90	16.5	32.7	48.1	61.9	73.4	82.5	88.8	92.5	93.4	92.5	88.6	82.4	73.2	61.7	47.8	32.4	16.1		
95	14.4	30.5	45.5	58.9	70.1	78.7	84.8	88.3	89.2	88.3	84.6	78.7	69.8	58.6	45.1	30.0	13.8		
100	11.7	27.1	42.1	55.3	66.2	74.6	80.5	83.8	84.7	83.8	80.2	74.5	65.8	55.0	41.6	26.5	11.1		
105	9.21	23.6	37.5	50.6	61.3	69.6	75.3	78.7	79.5	78.6	75.1	69.4	60.8	50.0	36.9	23.0	8.59		
110	6.98	20.4	33.4	45.1	55.3	63.4	69.0	72.3	73.2	72.2	68.6	63.0	54.7	44.6	32.8	19.7	6.37		
115	4.91	17.2	29.6	40.5	49.6	56.8	62.0	65.1	65.9	65.0	61.6	56.4	49.0	40.0	28.9	16.5	4.24		
120	2.82	14.2	25.7	36.1	44.6	51.3	55.9	58.7	59.4	58.6	55.6	50.9	44.1	35.5	24.9	13.4	2.08		
125	0.98	11.2	21.8	31.6	39.7	46.0	50.4	53.0	53.7	52.9	50.1	45.6	39.1	30.9	21.0	10.4	0.88		
130	0.62	8.31	17.9	26.9	34.5	40.6	44.8	47.3	48.0	47.2	44.4	40.1	33.9	26.2	17.1	7.56	0.57		
135	0.58	5.39	13.8	22.1	29.2	34.8	38.8	41.3	41.9	41.1	38.5	34.4	28.6	21.6	13.3	4.77	0.54		
140	0.58	2.39	9.60	16.7	23.5	28.8	32.6	34.9	35.5	34.7	32.2	28.5	23.2	16.9	9.64	1.82	0.54		
145	0.59	0.72	5.77	11.4	17.0	22.4	26.1	28.2	28.8	28.1	25.8	22.5	17.8	12.2	5.95	0.64	0.57		
150	0.61	0.65	2.30	6.77	11.0	15.4	19.4	21.3	21.9	21.3	19.4	16.4	12.5	7.70	2.08	0.62	0.59		
155	0.00	0.00	0.00	0.00	0.00	0.00	0.00	0.00	0.00	0.00	0.00	0.00	0.00	0.00	0.00	0.00	0.00		
160	0.00	0.00	0.00	0.00	0.00	0.00	0.00	0.00	0.00	0.00	0.00	0.00	0.00	0.00	0.00	0.00	0.00		
165	0.00	0.00	0.00	0.00	0.00	0.00	0.00	0.00	0.00	0.00	0.00	0.00	0.00	0.00	0.00	0.00	0.00		
170	0.00	0.00	0.00	0.00	0.00	0.00	0.00	0.00	0.00	0.00	0.00	0.00	0.00	0.00	0.00	0.00	0.00		
175	0.00	0.00	0.00	0.00	0.00	0.00	0.00	0.00	0.00	0.00	0.00	0.00	0.00	0.00	0.00	0.00	0.00		
180	0.00	0.00	0.00	0.00	0.00	0.00	0.00	0.00	0.00	0.00	0.00	0.00	0.00	0.00	0.00	0.00	0.00		

C Range: 0 - 360DEG

C Interval: 10.0DEG

Test Speed: HIGH

Temperature:25.3°C

Operators:

Test Date:13 December 2022

γ Range: 0 - 150DEG

γ Interval: 2.5DEG

Test System:EVERFINE GO-2000A_V1 SYSTEM V2.00.456

Humidity:65.0%

Test Distance:6.265m [K=1.0000]

Remarks: